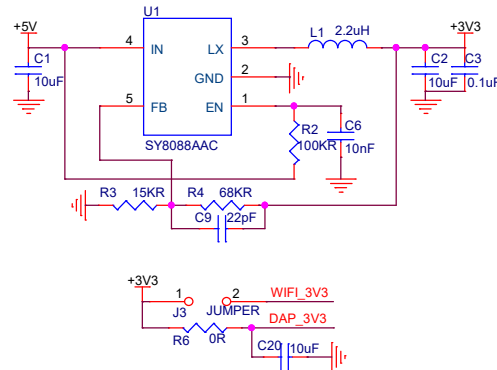
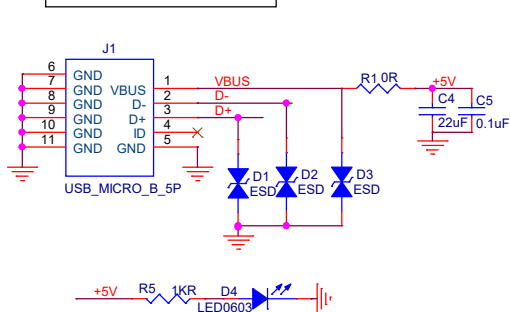
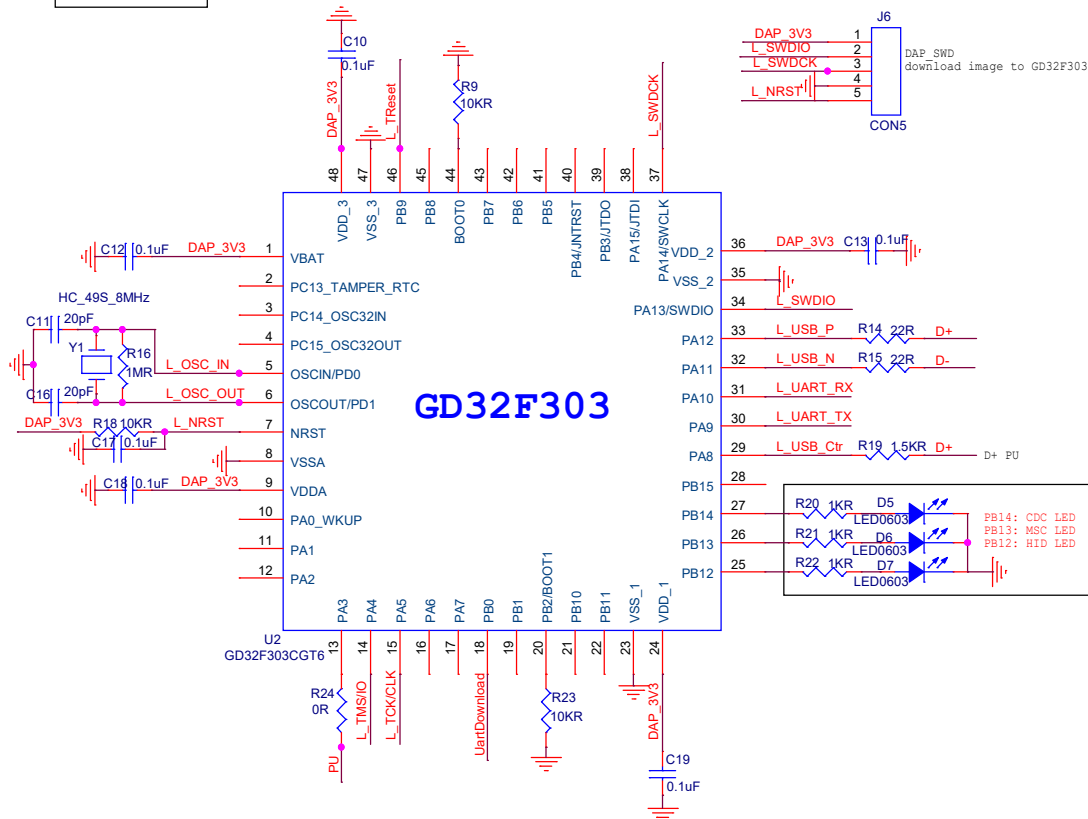


Giga Device			
Title GD32W515T-START-1V0			
Size A	Document Number 1 SystemBlock		Rev 1.0
Date:	Monday, November 08, 2021	Sheet	1 of 2

## USB & POWER



## DAPLINK



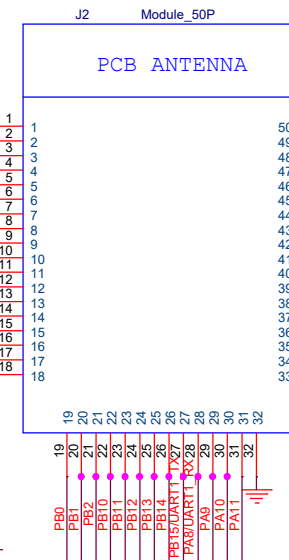
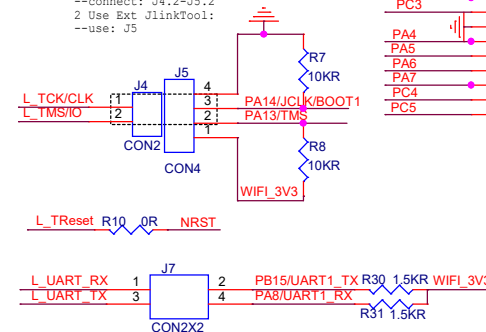
## Module: GD32W515x

### GPIO PinMux:

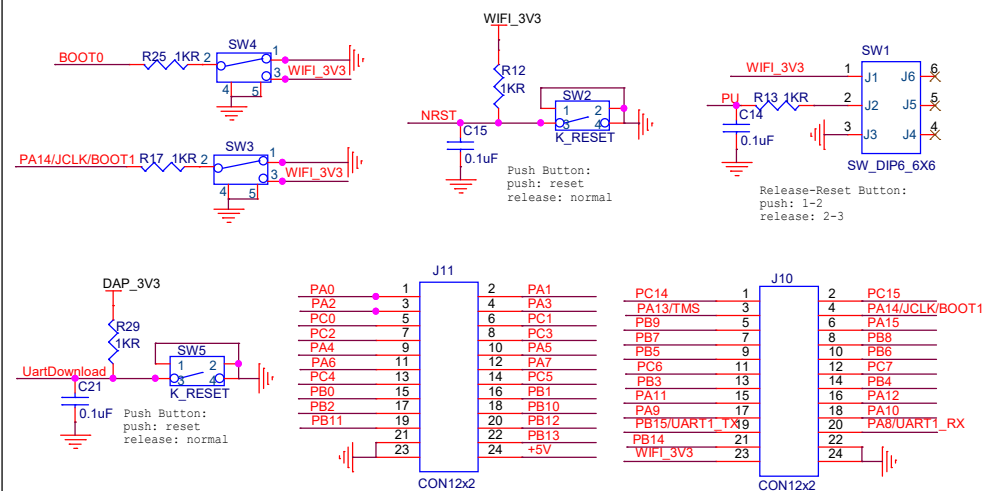
LogUart: PB15/PA8  
UART1\_TX/RX  
JTAG: PA13/PA14/PA15/PB3/PB4  
JTMS/JCLK/JTDI/JTDO/JNRST  
BOOT: BOOT0/1=PC8/PA14

### Download Image:

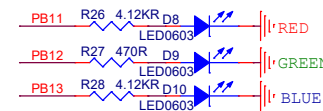
1 Use DAPLink,  
--connect: J4.1-J5.3  
--connect: J4.2-J5.2  
2 Use Ext JlinkTool:  
--use: J5



## Buttons & Connectors



### Undefined LEDs



## Giga Device

Title	GD32W515T-START-1V0		
Size	Document Number	Rev	
B	2 Main	1.0	
Date:	Friday, November 12, 2021	Sheet	2 of 2