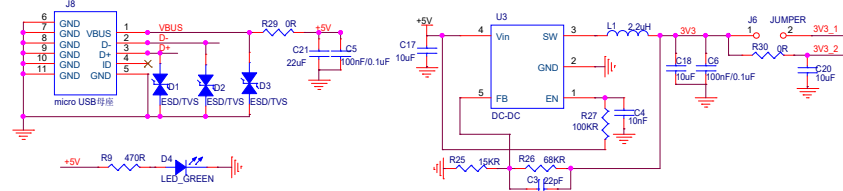


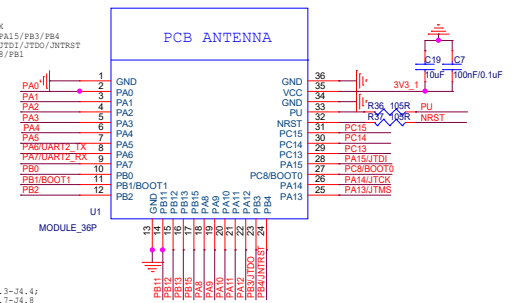
GD LINK



[Download Image](#)

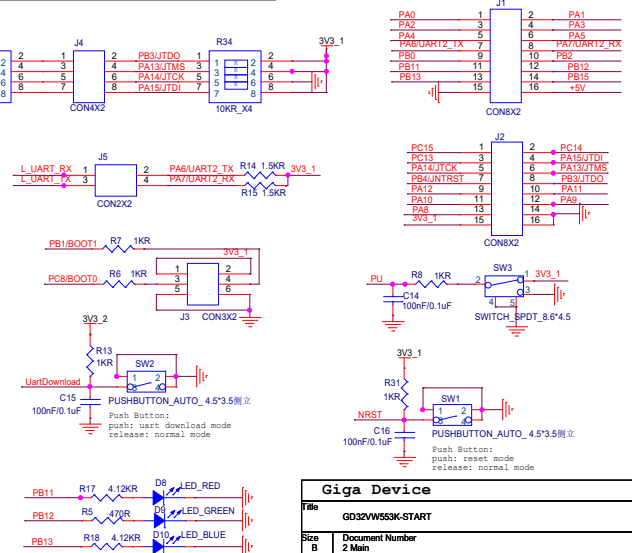
```
GPIO PinMux:
```

```
LogUart: PA6/PA7
         UART2 TX/RX
JTAG:    PA13/PA14/PA15/PB3/PB4
         JTMS/JTCK/JTDI/JTDO/JNTRST
BOOT:    BOOT0/1=PC8/PB1
```



Download Image:

- ```
1 Use GDLINK,
--connect: J4.1-J4.2; J4.3-J4.4;
 J4.5-J4.6; J4.7-J4.8
2 Use External JlinkTool:
--use: J4.2/4/6/8
```



|                           |                           |       |            |
|---------------------------|---------------------------|-------|------------|
| <b>Giga Device</b>        |                           |       |            |
| Title<br>GD32VW553K-START |                           |       |            |
| Size<br>B                 | Document Number<br>2 Main |       | Rev<br>3.0 |
| Date:                     | Tuesday, January 23, 2024 | Sheet | 2 of 2     |