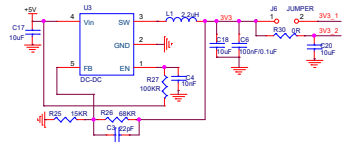
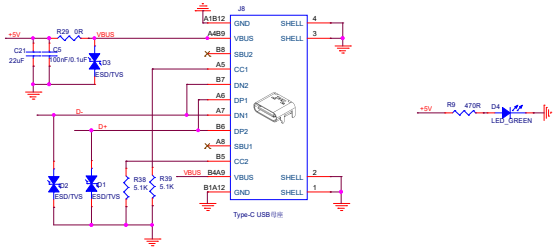


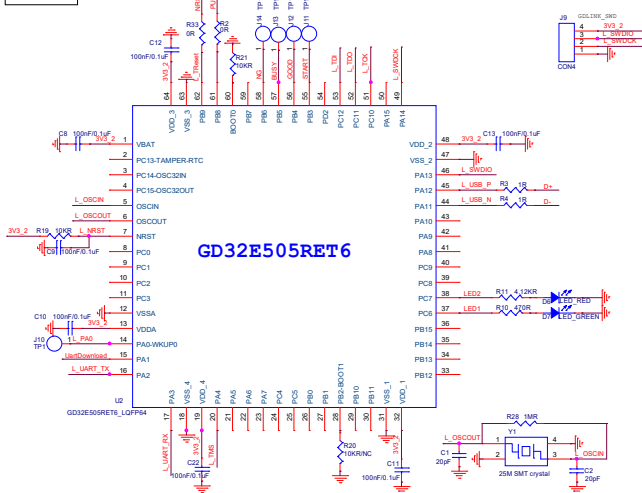
DC-DC



USB-C



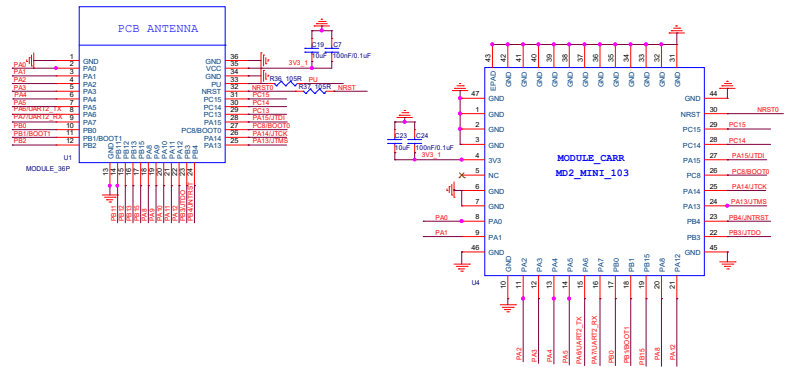
GDLINK



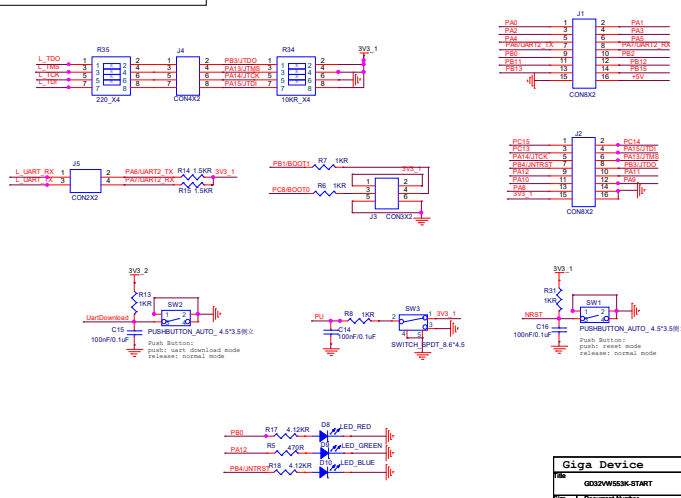
Module: GD32VW553 MD+MINI

GPIO PinMux:  
LogUart: PA6/PA7  
UART2\_TX/RX  
JTAG: PA13/PA14/PA15/PB3/PB4  
JTAG: PA13/PA14/PA15/PB3/PB4  
BOOT: BOOT0/1-PC8/PB1

Download Image:  
1 Use GDLINK,  
--connect: J4.1~J4.2; J4.3~J4.4;  
J4.5~J4.6; J4.7~J4.8  
2 Use External JLinkTool:  
--use: J4.2/4/6/8



Connectors & Buttons



Giga Device		
File	GD32VW553K-START	
Rev	Account Number	Rev
C	2 Year	4.1
Date	Monday, March 11, 2025	Sheet 2 of 2