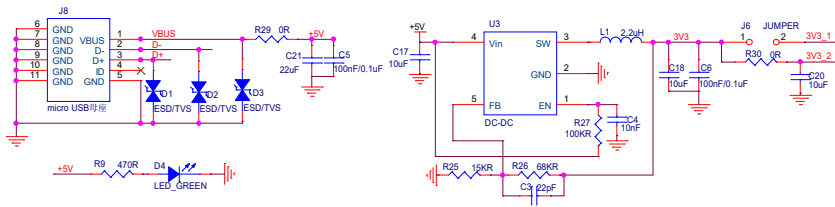
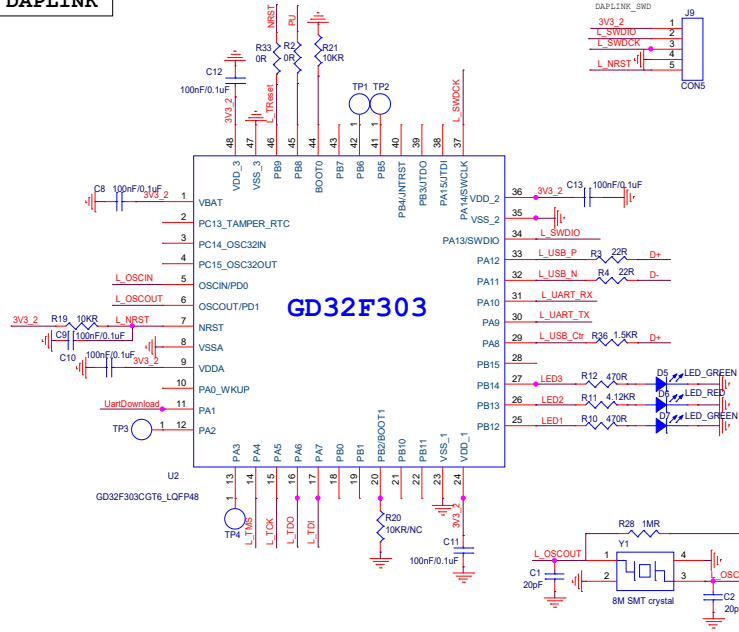


USB & DC-DC



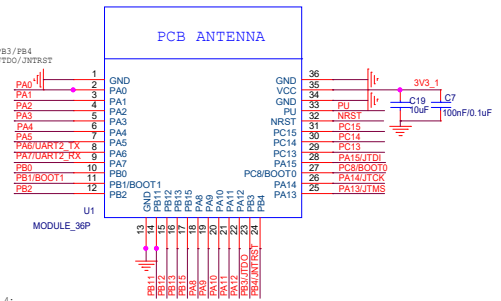
DAPLINK



Module: GD32VW553

GPIO PinMux:

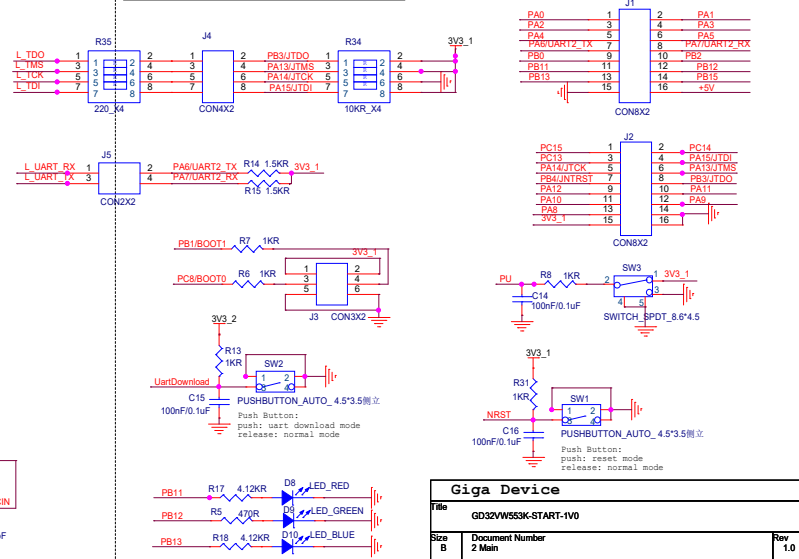
LogUart: PA6/PA7
UART2_TX/RX
JTAG: PA13/PA14/PA15/PB3/PB4
JTAG_VCC/PA13/PA14/PA15/PB3/PB4
BOOT: BOOT0/PA13/PA14/PA15/PB3/PB4



Download Image:

1 Use DAPLINK,
--connect: J4.1-J4.2; J4.3-J4.4;
J4.5-J4.6; J4.7-J4.8
2 Use External JlinkTool:
--use: J4.2/J4.6/8

Connectors & Buttons



Giga Device

Title		GD32VW553K-START-1V0	
Size		Document Number 2 Main	
Date		Monday, December 25, 2023	
Sheet		2 of 2	
Rev		1.0	